

The 2009 Broad Prize for Urban Education



San Bernardino City Unified School District California

PAGE	DATA
2	Background Information
3	Trends in Overall Reading and Mathematics Proficiency
4	Race/Ethnicity Trends in Reading Proficiency
5	Race/Ethnicity Trends in Mathematics Proficiency
6	Income Status Trends in Reading Proficiency
7	Income Status Trends in Mathematics Proficiency
8	Reading Proficiency Data Summary
9	Reading Proficiency Gaps
10	Mathematics Proficiency Data Summary
11	Mathematics Proficiency Gaps
12	Reading Outperformance by Proficiency Category: District vs. State
13	Mathematics Outperformance by Proficiency Category: District vs. State
14	Standardized Residuals for Reading
15	Standardized Residuals for Mathematics
16	High School Graduation Rates
17	College Readiness Data
18	Adequate Yearly Progress (AYP)
19	Methodology and Technical Notes

San Bernardino City Unified School District

CALIFORNIA

Background Information

Description of district: 2004–2007

	2004	2005	2006	2007
District characteristics				
Locale ¹	—	—	12	12
Number of schools	65	70	70	71
Student characteristics				
Enrollment	57,818	59,105	58,661	57,398
District size rank ²	68	67	70	70
Percent low-income students ³	81	82	79	78
Percent non-White students	84	85	86	87
Percent of students by race/ethnicity				
African American	20	19	18	17
Asian	3	3	3	3
Hispanic	60	62	64	66
White	16	14	13	12
American Indian/Alaska Native	1	1	1	1
Not reported ⁴	0	1	1	2
Percent English language learners	27	30	33	34
Percent students with disabilities	11	11	11	10
District expenditures				
Total current expenditures per pupil	\$7,239	\$7,697	\$8,390	\$8,860
Instructional expenditures per pupil	\$4,302	\$4,503	\$4,942	\$5,150
State expenditures				
Total current expenditures per pupil	\$7,673	\$7,905	\$8,301	\$8,952
Instructional expenditures per pupil	\$4,657	\$4,798	\$5,009	\$5,379

SOURCE: Analysis of data from the U.S. Department of Education, National Center for Education Statistics, Common Core of Data (CCD).

— Not available. † Data were suppressed due to unreliability. See methodology section.

¹ In 2006, the CCD began reporting a new 2-digit locale code based on urban clusters. As defined by the CCD, locale code 11 represents a large city, code 12 represents a midsize city, and code 21 represents a suburb of a large urban area.

² District size rank is based on enrollment in local school districts in the 50 states and DC, and does not include other district types or territories.

³ Low-income students are eligible for Free or Reduced-Price School Lunch (FRSL).

⁴ Not reported may include students with missing race/ethnicity information and/or students with race/ethnicities not recognized by the CCD.

NOTES: CCD data for 2008 were not available at time of report production. 2007 expenditures data were obtained from the U.S. Census Bureau and determined to be comparable to previous years' CCD figures. Some student demographic data were provided by the state or district education agency.

State test information: 2005–2008

Subject/level	Most recent test included in analysis	Grades included in analysis			
		2005	2006	2007	2008
Reading					
Elementary	California Standards Test (CST)	3, 4, 5	3, 4, 5	3, 4, 5	3, 4, 5
Middle	California Standards Test (CST)	6, 7, 8	6, 7, 8	6, 7, 8	6, 7, 8
High	California High School Exit Exam (CAHSEE)	10	10	10	10
Mathematics					
Elementary	California Standards Test (CST)	3, 4, 5	3, 4, 5	3, 4, 5	3, 4, 5
Middle	California Standards Test (CST)	6, 7, 8	6, 7, 8	6, 7, 8	6, 7, 8
High	California High School Exit Exam (CAHSEE)	10	10	10	10

SOURCE: State education agency.

— Not available.

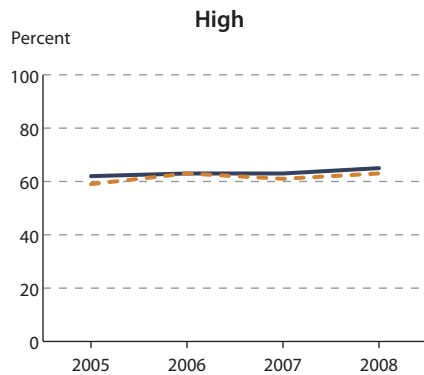
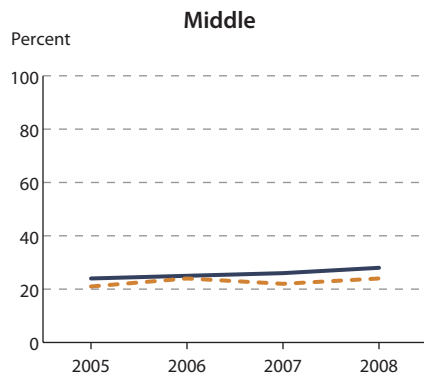
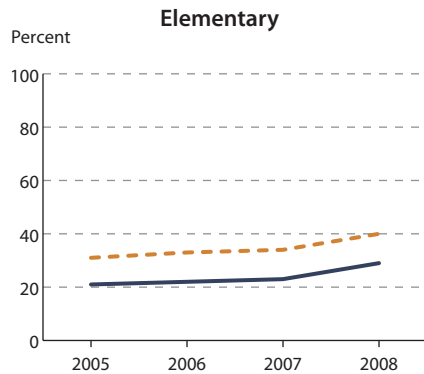
NOTES: There were no test changes during the period covered in this report.

San Bernardino City Unified School District CALIFORNIA

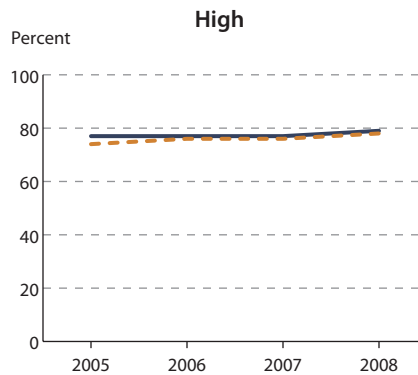
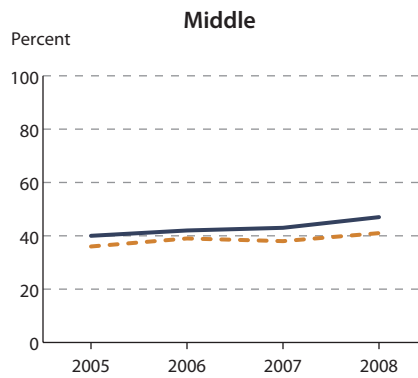
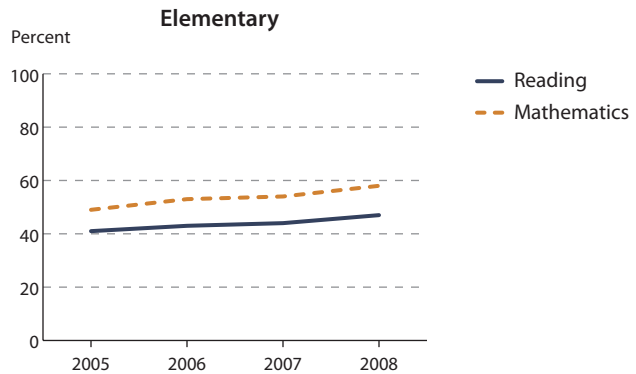
Trends in Overall Reading and Mathematics Proficiency

Percentage of all students in the district and the state¹ scoring at or above proficient in reading and mathematics in elementary, middle, and high school: 2005–2008

DISTRICT PROFICIENCY RATE



STATE¹ PROFICIENCY RATE



SOURCE: Analysis of state test data.

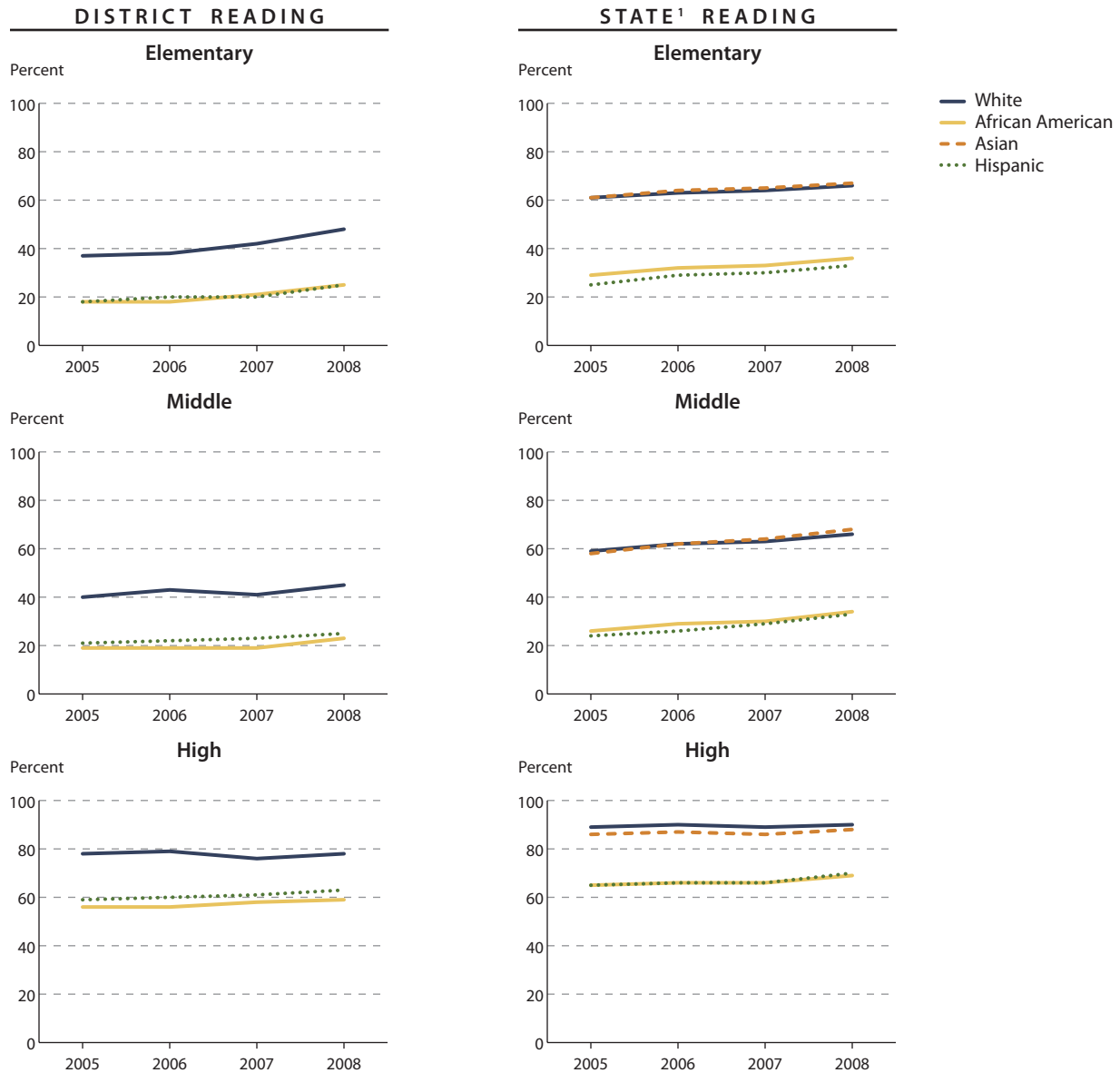
¹ Unless otherwise indicated in the NOTES section below, state values exclude the district's results; see methodology section.

NOTES: See tables on pages 8 and 10 for details.

San Bernardino City Unified School District CALIFORNIA

Race/Ethnicity Trends in Reading Proficiency

Percentage of students scoring at or above proficient in reading, by race/ethnicity, for the district and the state¹: 2005–2008



SOURCE: Analysis of state test data.

¹ Unless otherwise indicated in the NOTES section below, state values exclude the district's results; see methodology section.

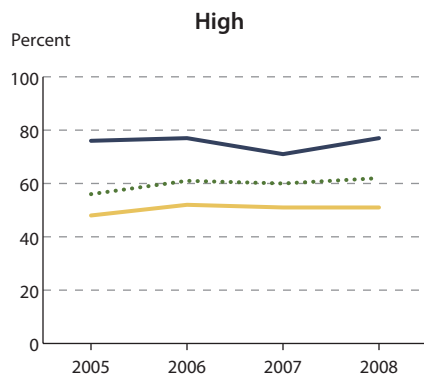
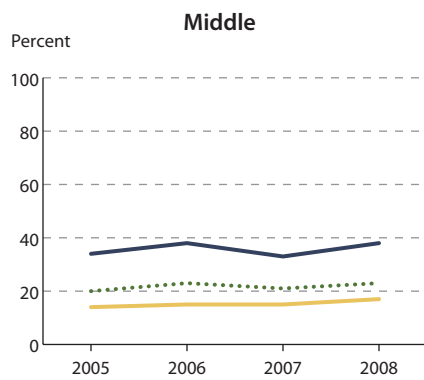
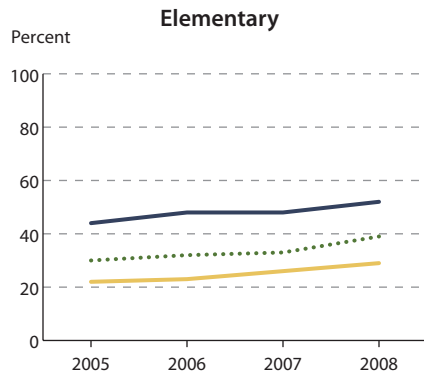
NOTES: See table on page 8 for details.

San Bernardino City Unified School District CALIFORNIA

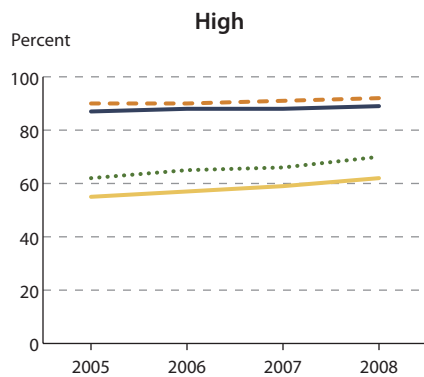
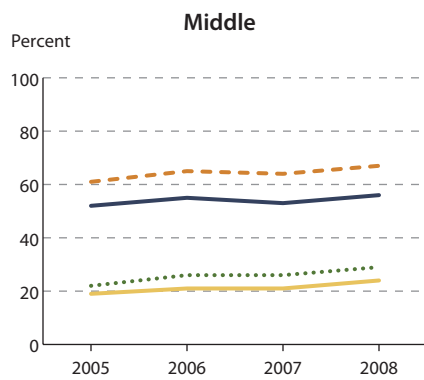
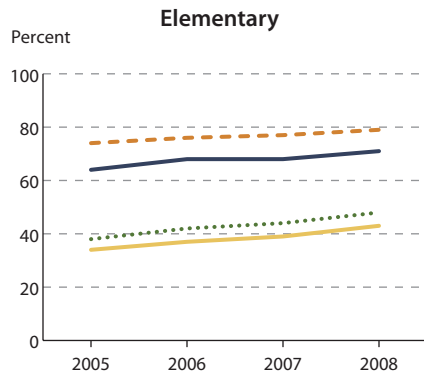
Race/Ethnicity Trends in Mathematics Proficiency

Percentage of students scoring at or above proficient in mathematics, by race/ethnicity, for the district and the state¹: 2005–2008

DISTRICT MATHEMATICS



STATE¹ MATHEMATICS



— White
— African American
- - Asian
... Hispanic

SOURCE: Analysis of state test data.

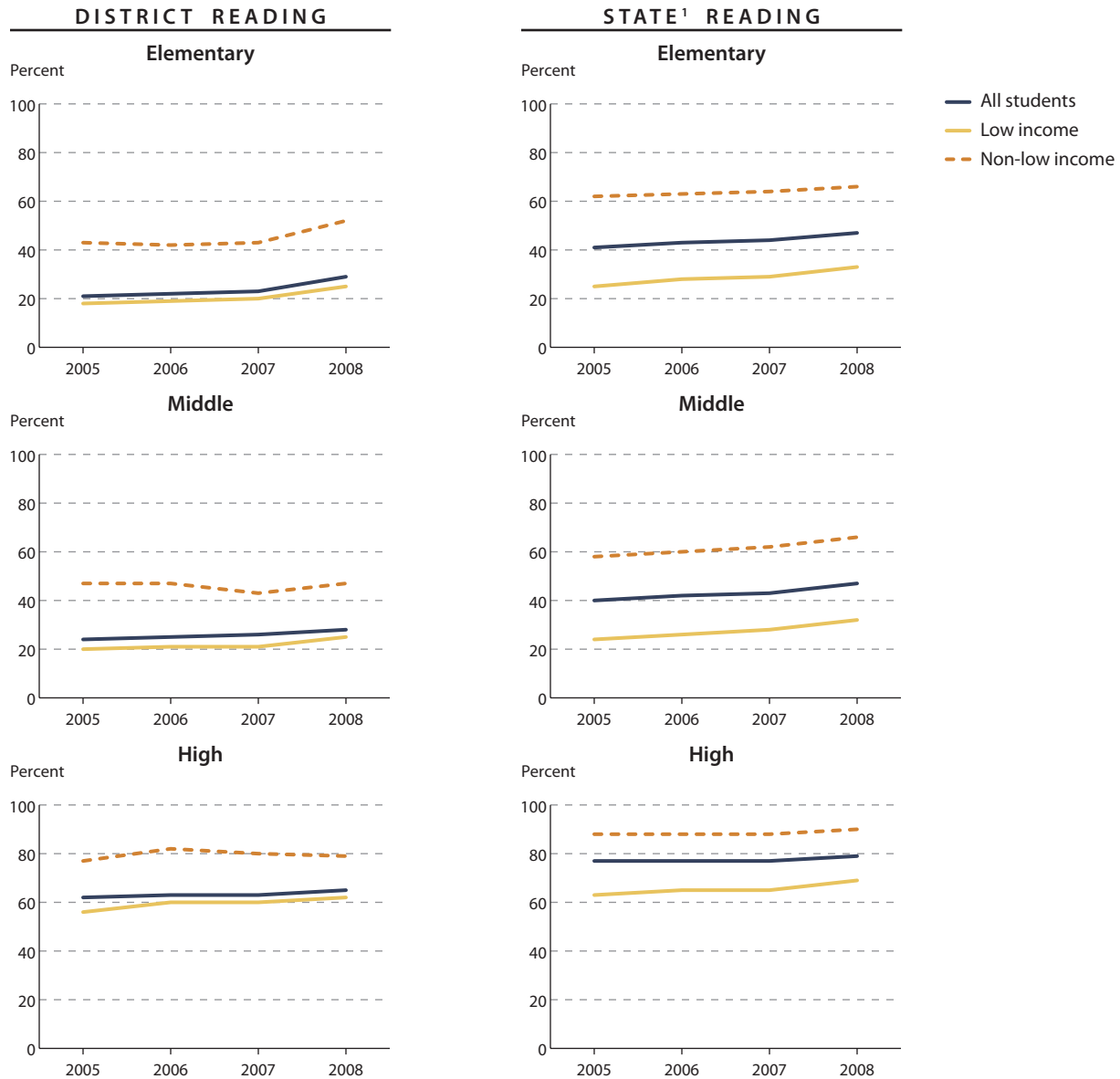
¹ Unless otherwise indicated in the NOTES section below, state values exclude the district's results; see methodology section.

NOTES: See table on page 10 for details.

San Bernardino City Unified School District CALIFORNIA

Income Status Trends in Reading Proficiency

Percentage of students scoring at or above proficient in reading, by income status, for the district and the state¹: 2005–2008



SOURCE: Analysis of state test data.

¹ Unless otherwise indicated in the NOTES section below, state values exclude the district's results; see methodology section.

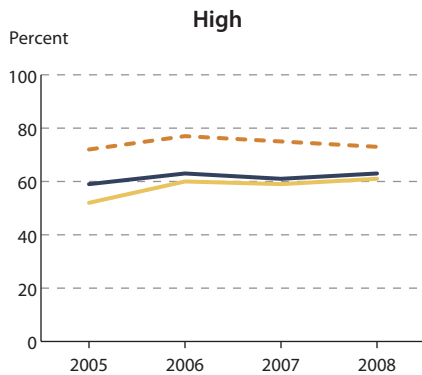
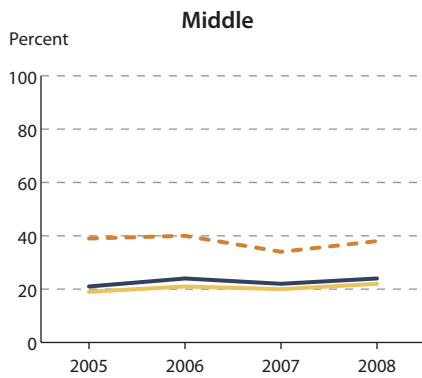
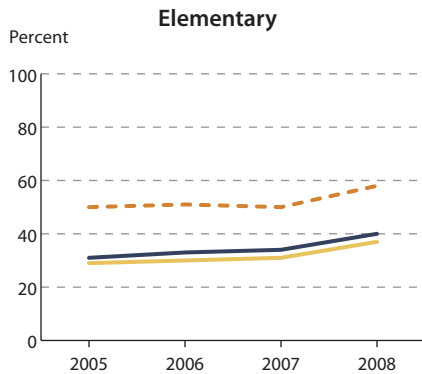
NOTES: See table on page 8 for details.

San Bernardino City Unified School District CALIFORNIA

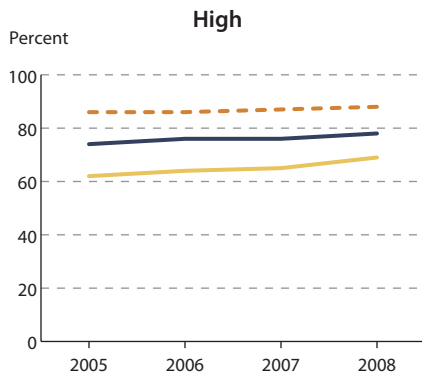
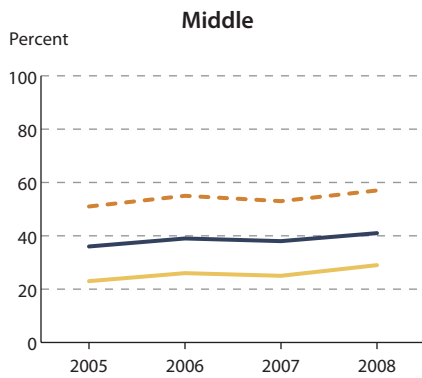
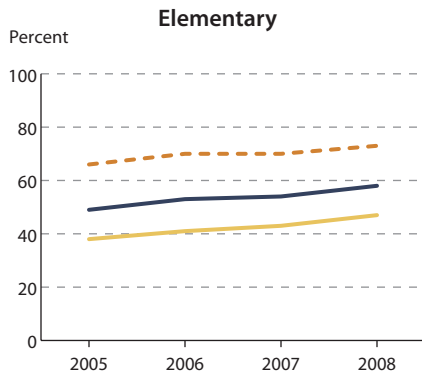
Income Status Trends in Mathematics Proficiency

Percentage of students scoring at or above proficient in mathematics, by income status, for the district and the state¹: 2005–2008

DISTRICT MATHEMATICS



STATE¹ MATHEMATICS



— All students
— Low income
- - Non-low income

SOURCE: Analysis of state test data.

¹ Unless otherwise indicated in the NOTES section below, state values exclude the district's results; see methodology section.

NOTES: See table on page 10 for details.

San Bernardino City Unified School District

CALIFORNIA

Reading Proficiency Data Summary

Percentage of students in the district and the state¹ scoring at or above proficient in reading: 2005–2008

	2005	2006	2007	2008	Change			Average change
					2005–2008	2006–2008	2007–2008	
Elementary								
District								
All	21	22	23	29	8	6	6	2
African American	18	18	21	25	7	6	4	2
Asian	†	†	†	†	†	†	†	†
Hispanic	18	20	20	25	7	5	5	2
White	37	38	42	48	11	10	6	4
Low income	18	19	20	25	8	6	6	2
Non-low income	43	42	43	52	9	10	9	3
State¹								
All	41	43	44	47	7	4	3	2
African American	29	32	33	36	6	4	3	2
Asian	61	64	65	67	7	4	3	2
Hispanic	25	29	30	33	8	4	3	2
White	61	63	64	66	5	4	2	2
Low income	25	28	29	33	8	5	4	2
Non-low income	62	63	64	66	4	3	2	1
Middle								
District								
All	24	25	26	28	4	3	2	1
African American	19	19	19	23	5	4	4	1
Asian	†	†	†	†	†	†	†	†
Hispanic	21	22	23	25	4	3	3	1
White	40	43	41	45	5	2	4	1
Low income	20	21	21	25	5	4	4	1
Non-low income	47	47	43	47	0	0	4	0
State¹								
All	40	42	43	47	7	5	4	2
African American	26	29	30	34	8	5	4	2
Asian	58	62	64	68	10	6	4	3
Hispanic	24	26	29	33	8	6	4	3
White	59	62	63	66	7	4	3	2
Low income	24	26	28	32	8	6	4	3
Non-low income	58	60	62	66	8	5	4	3
High								
District								
All	62	63	63	65	3	2	2	1
African American	56	56	58	59	2	3	1	1
Asian	†	†	†	†	†	†	†	†
Hispanic	59	60	61	63	4	3	2	1
White	78	79	76	78	0	-1	2	0
Low income	56	60	60	62	7	2	2	2
Non-low income	77	82	80	79	2	-3	-1	0
State¹								
All	77	77	77	79	2	2	2	1
African American	65	66	66	69	4	3	3	1
Asian	86	87	86	88	2	2	2	1
Hispanic	65	66	66	70	5	4	4	1
White	89	90	89	90	1	1	1	0
Low income	63	65	65	69	5	4	4	2
Non-low income	88	88	88	90	1	1	1	0

SOURCE: Analysis of state test data.

— Not available. † Data were suppressed due to unreliability or if the subgroup represented less than 5 percent of test takers at a level. See methodology section.

‡ Calculation could not be performed due to a change in the state test.

¹ Unless otherwise indicated in the NOTES section below, state values exclude the district's results; see methodology section.

NOTES: Details on the calculation of **average change** are found in the methodology section. **Positive change values** appear in color. Data reported for **percent proficient or above on the high school exam** correspond to percent passing.

San Bernardino City Unified School District

CALIFORNIA

Reading Proficiency Gaps

Percentage-point gaps in reading proficiency rates between disadvantaged and advantaged groups: 2005–2008

	2005	2006	2007	2008	Change			Average change	2008 decile rank
					2005–2008	2006–2008	2007–2008		
Elementary									
Internal district gap									
African American vs. White	-19	-19	-21	-23	-4	-4	-2	-1	7
Hispanic vs. White	-19	-17	-22	-23	-4	-5	-1	-2	5
Low income vs. non-low income	-26	-23	-24	-27	-1	-4	-3	0	6
Internal district vs. internal state ¹ gap									
African American vs. White	12	11	10	8	-5	-4	-2	-2	—
Hispanic vs. White	16	16	12	10	-6	-6	-2	-2	—
Low income vs. non-low income	11	12	11	7	-4	-5	-4	-1	—
External gap: district disadvantaged vs. state ¹ advantaged									
African American vs. White	-43	-44	-43	-41	2	3	2	1	—
Hispanic vs. White	-43	-42	-44	-41	2	1	3	0	—
Low income vs. non-low income	-44	-44	-45	-41	3	3	4	1	—
Middle									
Internal district gap									
African American vs. White	-21	-24	-22	-22	0	2	0	0	5
Hispanic vs. White	-19	-21	-19	-20	-1	1	-1	0	5
Low income vs. non-low income	-27	-26	-21	-22	5	3	-1	2	5
Internal district vs. internal state ¹ gap									
African American vs. White	12	10	12	11	-1	1	-1	0	—
Hispanic vs. White	16	15	16	13	-2	-1	-2	-1	—
Low income vs. non-low income	7	8	12	11	5	3	-1	2	—
External gap: district disadvantaged vs. state ¹ advantaged									
African American vs. White	-40	-43	-44	-42	-2	0	1	-1	—
Hispanic vs. White	-38	-40	-40	-40	-2	0	0	-1	—
Low income vs. non-low income	-38	-39	-41	-41	-3	-2	0	-1	—
High									
Internal district gap									
African American vs. White	-22	-23	-18	-19	2	4	-1	1	7
Hispanic vs. White	-19	-19	-15	-15	4	4	0	2	5
Low income vs. non-low income	-22	-22	-19	-17	5	5	2	2	6
Internal district vs. internal state ¹ gap									
African American vs. White	3	1	5	2	0	1	-3	0	—
Hispanic vs. White	5	4	9	6	1	1	-3	1	—
Low income vs. non-low income	3	2	4	4	1	2	0	1	—
External gap: district disadvantaged vs. state ¹ advantaged									
African American vs. White	-33	-34	-32	-32	1	2	0	1	—
Hispanic vs. White	-30	-30	-28	-27	3	3	1	1	—
Low income vs. non-low income	-33	-29	-28	-27	5	1	1	2	—

SOURCE: Analysis of state test data.

— Not available. † Data were suppressed due to unreliability or if the subgroup represented less than 5 percent of test takers at a level. See methodology section.

‡ Calculation could not be performed due to a change in the state test.

¹ Unless otherwise indicated in the NOTES section below, state values exclude the district's results; see methodology section.

NOTES: In the first four columns, negative numbers indicate an achievement gap, where the disadvantaged group performed lower than the advantaged group. (Positive numbers indicate the disadvantaged group performed higher than the advantaged group.) In the "change" columns, negative numbers indicate the achievement gap widened; positive numbers indicate the achievement gap narrowed. Average change values appear in color when the gap is closing; details on the definition of a gap closure are found in the methodology section. Details on the calculation of average change are also found in the methodology section. 2008 decile ranks appear in color when the 2008 gap is among the 20 percent of districts with the smallest gaps in the state.

San Bernardino City Unified School District

CALIFORNIA

Mathematics Proficiency Data Summary

Percentage of students in the district and the state¹ scoring at or above proficient in mathematics: 2005–2008

	2005	2006	2007	2008	Change			Average change
					2005–2008	2006–2008	2007–2008	
Elementary								
District								
All	31	33	34	40	9	7	6	3
African American	22	23	26	29	7	6	3	2
Asian	†	†	†	†	†	†	†	†
Hispanic	30	32	33	39	9	7	6	3
White	44	48	48	52	8	4	5	2
Low income	29	30	31	37	9	7	6	3
Non-low income	50	51	50	58	8	7	8	2
State¹								
All	49	53	54	58	8	4	3	3
African American	34	37	39	43	9	6	5	3
Asian	74	76	77	79	6	3	2	2
Hispanic	38	42	44	48	11	7	5	3
White	64	68	68	71	7	3	3	2
Low income	38	41	43	47	10	6	5	3
Non-low income	66	70	70	73	7	3	3	2
Middle								
District								
All	21	24	22	24	2	0	2	1
African American	14	15	15	17	3	2	2	1
Asian	†	†	†	†	†	†	†	†
Hispanic	20	23	21	23	3	1	2	1
White	34	38	33	38	3	0	5	0
Low income	19	21	20	22	3	0	2	1
Non-low income	39	40	34	38	-1	-2	4	-1
State¹								
All	36	39	38	41	5	2	3	1
African American	19	21	21	24	6	3	3	2
Asian	61	65	64	67	6	2	4	2
Hispanic	22	26	26	29	7	3	4	2
White	52	55	53	56	5	1	3	1
Low income	23	26	25	29	6	3	4	2
Non-low income	51	55	53	57	6	2	4	2
High								
District								
All	59	63	61	63	4	0	2	1
African American	48	52	51	51	3	-1	0	1
Asian	†	†	†	†	†	†	†	†
Hispanic	56	61	60	62	6	1	2	2
White	76	77	71	77	0	0	5	0
Low income	52	60	59	61	10	1	2	3
Non-low income	72	77	75	73	1	-4	-1	0
State¹								
All	74	76	76	78	4	3	3	1
African American	55	57	59	62	7	5	4	2
Asian	90	90	91	92	3	2	1	1
Hispanic	62	65	66	70	7	5	4	2
White	87	88	88	89	2	1	1	1
Low income	62	64	65	69	8	5	4	2
Non-low income	86	86	87	88	3	2	2	1

SOURCE: Analysis of state test data.

— Not available. † Data were suppressed due to unreliability or if the subgroup represented less than 5 percent of test takers at a level. See methodology section.

‡ Calculation could not be performed due to a change in the state test.

¹ Unless otherwise indicated in the NOTES section below, state values exclude the district's results; see methodology section.

NOTES: Details on the calculation of **average change** are found in the methodology section. **Positive change values** appear in color. Data reported for **percent proficient or above on the high school exam** correspond to percent passing.

San Bernardino City Unified School District

CALIFORNIA

Mathematics Proficiency Gaps

Percentage-point gaps in mathematics proficiency rates between disadvantaged and advantaged groups: 2005–2008

	2005	2006	2007	2008	Change			Average change	2008 decile rank
					2005–2008	2006–2008	2007–2008		
Elementary									
Internal district gap									
African American vs. White	-22	-25	-22	-23	-1	2	-1	0	6
Hispanic vs. White	-14	-16	-14	-13	0	3	1	0	4
Low income vs. non-low income	-22	-20	-19	-20	1	0	-2	1	6
Internal district vs. internal state ¹ gap									
African American vs. White	8	7	8	5	-4	-2	-3	-1	—
Hispanic vs. White	13	11	10	9	-4	-1	-1	-1	—
Low income vs. non-low income	7	8	9	5	-2	-3	-4	0	—
External gap: district disadvantaged vs. state ¹ advantaged									
African American vs. White	-42	-45	-42	-42	1	3	1	0	—
Hispanic vs. White	-34	-36	-35	-32	2	4	3	1	—
Low income vs. non-low income	-38	-40	-39	-35	2	4	4	1	—
Middle									
Internal district gap									
African American vs. White	-20	-23	-18	-20	0	3	-3	1	5
Hispanic vs. White	-15	-15	-12	-14	0	1	-3	0	4
Low income vs. non-low income	-21	-19	-14	-16	4	3	-2	2	5
Internal district vs. internal state ¹ gap									
African American vs. White	13	11	14	12	-1	1	-2	0	—
Hispanic vs. White	15	13	15	13	-2	-1	-3	0	—
Low income vs. non-low income	7	10	14	11	4	1	-2	2	—
External gap: district disadvantaged vs. state ¹ advantaged									
African American vs. White	-38	-40	-38	-39	-1	1	-1	0	—
Hispanic vs. White	-32	-32	-32	-33	-1	-1	-1	0	—
Low income vs. non-low income	-32	-33	-33	-35	-3	-2	-2	-1	—
High									
Internal district gap									
African American vs. White	-28	-25	-20	-26	2	-1	-5	1	8
Hispanic vs. White	-20	-15	-11	-14	6	1	-3	2	5
Low income vs. non-low income	-21	-17	-16	-12	9	5	4	3	4
Internal district vs. internal state ¹ gap									
African American vs. White	4	6	9	2	-3	-5	-8	0	—
Hispanic vs. White	4	7	11	5	1	-2	-6	1	—
Low income vs. non-low income	4	5	6	7	4	3	1	1	—
External gap: district disadvantaged vs. state ¹ advantaged									
African American vs. White	-39	-36	-37	-38	0	-2	-1	0	—
Hispanic vs. White	-31	-27	-28	-27	4	0	1	1	—
Low income vs. non-low income	-34	-26	-27	-27	7	-1	1	2	—

SOURCE: Analysis of state test data.

— Not available. † Data were suppressed due to unreliability or if the subgroup represented less than 5 percent of test takers at a level. See methodology section.

‡ Calculation could not be performed due to a change in the state test.

¹ Unless otherwise indicated in the NOTES section below, state values exclude the district's results; see methodology section.

NOTES: In the first four columns, negative numbers indicate an achievement gap, where the disadvantaged group performed lower than the advantaged group. (Positive numbers indicate the disadvantaged group performed higher than the advantaged group.) In the "change" columns, negative numbers indicate the achievement gap widened; positive numbers indicate the achievement gap narrowed. Average change values appear in color when the gap is closing; details on the definition of a gap closure are found in the methodology section. Details on the calculation of average change are also found in the methodology section. 2008 decile ranks appear in color when the 2008 gap is among the 20 percent of districts with the smallest gaps in the state.

San Bernardino City Unified School District

CALIFORNIA

Reading Outperformance by Proficiency Category: District vs. State¹

Percentage of students at various levels of proficiency in reading in 2008, average change from 2005 to 2008, and count of instances when the district outperformed the state¹

	2008 performance				Average change			
	Below Proficient	Proficient	Advanced	Proficient or above	Below Proficient	Proficient	Advanced	Proficient or above
Elementary								
District								
All	71	21	7	29	-2	2	1	2
African American	75	19	5	25	-2	2	1	2
Asian	†	†	†	†	†	†	†	†
Hispanic	75	20	5	25	-2	2	0	2
White	52	31	16	48	-4	2	1	4
Low income	75	20	6	25	-2	2	1	2
Non-low income	48	35	17	52	-3	2	1	3
State ¹								
All	53	28	19	47	-2	1	1	2
African American	64	25	11	36	-2	1	1	2
Asian	33	31	36	67	-2	0	2	2
Hispanic	67	24	9	33	-2	1	1	2
White	34	33	33	66	-2	0	1	2
Low income	67	24	9	33	-2	1	1	2
Non-low income	34	33	33	66	-1	0	1	1
Middle								
District								
All	72	21	7	28	-1	1	0	1
African American	77	18	6	23	-1	1	1	1
Asian	†	†	†	†	†	†	†	†
Hispanic	75	20	6	25	-1	1	0	1
White	55	29	16	45	-1	1	0	1
Low income	75	19	6	25	-1	1	1	1
Non-low income	53	29	18	47	0	0	0	0
State ¹								
All	53	28	19	47	-2	1	2	2
African American	66	24	10	34	-2	1	1	2
Asian	32	31	37	68	-3	0	3	3
Hispanic	67	24	9	33	-3	2	1	3
White	34	33	32	66	-2	0	2	2
Low income	68	23	9	32	-3	1	1	3
Non-low income	34	33	33	66	-3	0	3	3
High								
District								
All	35	—	—	65	-1	—	—	1
African American	41	—	—	59	-1	—	—	1
Asian	†	—	—	†	†	—	—	†
Hispanic	37	—	—	63	-1	—	—	1
White	22	—	—	78	0	—	—	0
Low income	38	—	—	62	-2	—	—	2
Non-low income	21	—	—	79	0	—	—	0
State ¹								
All	21	—	—	79	-1	—	—	1
African American	31	—	—	69	-1	—	—	1
Asian	12	—	—	88	-1	—	—	1
Hispanic	30	—	—	70	-1	—	—	1
White	10	—	—	90	0	—	—	0
Low income	31	—	—	69	-2	—	—	2
Non-low income	10	—	—	90	0	—	—	0
Count of district outperformances/available comparisons								
All	0/3	0/2	0/2	0/3	0/3	1/2	0/2	0/3
African American	0/3	0/2	0/2	0/3	0/3	0/2	0/2	0/3
Asian	†	†	†	†	†	†	†	†
Hispanic	0/3	0/2	0/2	0/3	0/3	0/2	0/2	0/3
White	0/3	0/2	0/2	0/3	1/3	2/2	0/2	1/3
Low income	0/3	0/2	0/2	0/3	1/3	0/2	0/2	1/3
Non-low income	0/3	1/2	0/2	0/3	1/3	1/2	0/2	1/3

SOURCE: Analysis of state test data.

— Not available. † Data were suppressed due to unreliability or if the subgroup represented less than 5 percent of test takers at a level. See methodology section.

‡ Calculation could not be performed due to a change in the state test.

¹ Unless otherwise indicated in the NOTES section below, state values exclude the district's results; see methodology section.

NOTES: **Advanced** is the state's highest proficiency level above proficient. **Outperformance comparisons** were performed on unrounded proficiencies. Instances of the **district outperforming the state** by a value of 0.5 percent or more appear in color. Details on the calculation of **average change** are found in the methodology section. At the elementary and middle school levels, **below proficient** combines the Basic, Below Basic, and Far Below Basic categories. Separate categories for the proficient and advanced categories are not reported for the California High School Exit Exam.

San Bernardino City Unified School District

CALIFORNIA

Mathematics Outperformance by Proficiency Category: District vs. State¹

Percentage of students at various levels of proficiency in mathematics in 2008, average change from 2005 to 2008, and count of instances when the district outperformed the state¹

	2008 performance				Average change			
	Below Proficient	Proficient	Advanced	Proficient or above	Below Proficient	Proficient	Advanced	Proficient or above
Elementary								
District								
All	60	26	14	40	-3	1	1	3
African American	71	21	9	29	-2	2	1	2
Asian	†	†	†	†	†	†	†	†
Hispanic	61	26	13	39	-3	2	1	3
White	48	28	24	52	-2	0	2	2
Low income	63	25	12	37	-3	2	1	3
Non-low income	42	30	28	58	-2	0	2	2
State ¹								
All	42	29	29	58	-3	1	2	3
African American	57	26	17	43	-3	1	2	3
Asian	21	27	53	79	-2	0	2	2
Hispanic	52	29	20	48	-3	1	2	3
White	29	30	41	71	-2	0	2	2
Low income	53	28	19	47	-3	1	2	3
Non-low income	27	30	43	73	-2	0	2	2
Middle								
District								
All	76	19	5	24	-1	0	0	1
African American	83	15	3	17	-1	1	0	1
Asian	†	†	†	†	†	†	†	†
Hispanic	77	18	5	23	-1	0	0	1
White	62	26	11	38	0	0	0	0
Low income	78	18	4	22	-1	1	0	1
Non-low income	62	25	13	38	1	-1	0	-1
State ¹								
All	59	28	14	41	-1	1	1	1
African American	76	19	5	24	-2	1	1	2
Asian	33	34	33	67	-2	0	1	2
Hispanic	71	23	7	29	-2	1	1	2
White	44	35	22	56	-1	0	1	1
Low income	71	22	7	29	-2	1	1	2
Non-low income	43	34	23	57	-2	0	1	2
High								
District								
All	37	—	—	63	-1	—	—	1
African American	49	—	—	51	-1	—	—	1
Asian	†	—	—	†	†	—	—	†
Hispanic	38	—	—	62	-2	—	—	2
White	23	—	—	77	0	—	—	0
Low income	39	—	—	61	-3	—	—	3
Non-low income	27	—	—	73	0	—	—	0
State ¹								
All	22	—	—	78	-1	—	—	1
African American	38	—	—	62	-2	—	—	2
Asian	8	—	—	92	-1	—	—	1
Hispanic	30	—	—	70	-2	—	—	2
White	11	—	—	89	-1	—	—	1
Low income	31	—	—	69	-2	—	—	2
Non-low income	12	—	—	88	-1	—	—	1
Count of district outperformances/available comparisons								
All	0/3	0/2	0/2	0/3	0/3	1/2	0/2	0/3
African American	0/3	0/2	0/2	0/3	0/3	0/2	0/2	0/3
Asian	†	†	†	†	†	†	†	†
Hispanic	0/3	0/2	0/2	0/3	0/3	0/2	0/2	0/3
White	0/3	0/2	0/2	0/3	0/3	0/2	0/2	0/3
Low income	0/3	0/2	0/2	0/3	0/3	0/2	0/2	0/3
Non-low income	0/3	0/2	0/2	0/3	0/3	0/2	0/2	0/3

SOURCE: Analysis of state test data.

— Not available. † Data were suppressed due to unreliability or if the subgroup represented less than 5 percent of test takers at a level. See methodology section.

‡ Calculation could not be performed due to a change in the state test.

¹ Unless otherwise indicated in the NOTES section below, state values exclude the district's results; see methodology section.

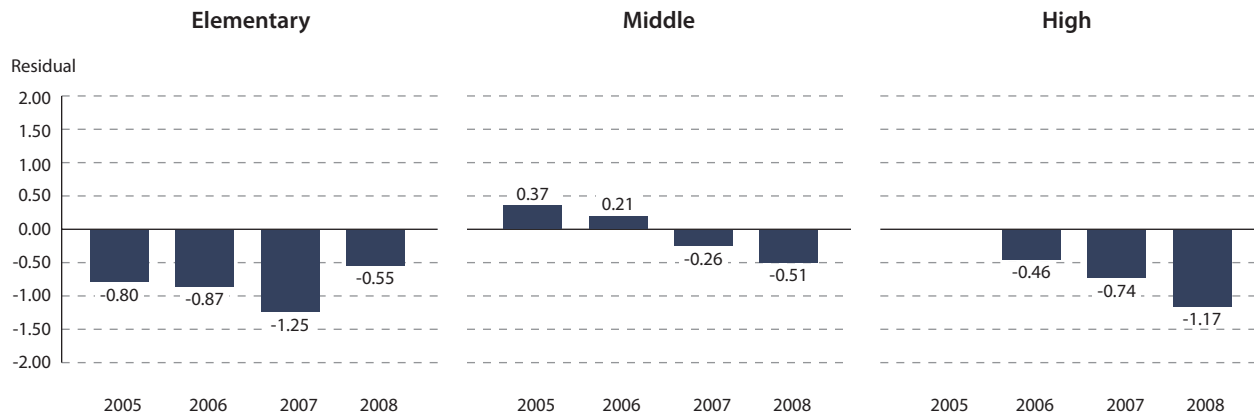
NOTES: **Advanced** is the state's highest proficiency level above proficient. **Outperformance comparisons** were performed on unrounded proficiencies. Instances of the **district outperforming the state** by a value of 0.5 percent or more appear in color. Details on the calculation of **average change** are found in the methodology section. At the elementary and middle school levels, **below proficient** combines the Basic, Below Basic, and Far Below Basic categories. Separate categories for the proficient and advanced categories are not reported for the California High School Exit Exam.

San Bernardino City Unified School District

CALIFORNIA

Standardized Residuals for Reading

Standardized residuals¹ for regressions of the percentage of students in the district scoring at or above proficient in reading, controlling for district poverty level: 2005–2008



SOURCE: Analysis of state test data.

¹ Positive residuals indicate higher-than-expected performance, and negative residuals indicate lower-than-expected performance, given the district's poverty level. Residuals are expressed in standard units. Regressions were weighted by district size.

NOTES: See below for details.

Standardized residuals¹ for regressions of the percentage of students in the district scoring at or above proficient in reading, controlling for district poverty level: 2005–2008

	2005	2006	2007	2008	Average change	Decile rank ^{2,3}
Elementary	-0.80	-0.87	-1.25	-0.55	0.04	7.00
Middle	0.37	0.21	-0.26	-0.51	-0.31	6.50
High	†	-0.46	-0.74	-1.17	-0.36	8.50
Count of positive residuals in reading/ total available	1/2	1/3	0/3	0/3	1/3	7.33
Count of positive residuals in reading and mathematics/total available	2/4	2/6	0/6	0/6	1/6	7.42

SOURCE: Analysis of state test data.

— Not available. † Data were suppressed due to unreliability. See methodology section.

¹ Positive residuals indicate higher-than-expected performance, and negative residuals indicate lower-than-expected performance, given the district's poverty level. Residuals are expressed in standard units. Regressions were weighted by district size.

² Average decile rank of 2007 and 2008 residuals. See methodology section.

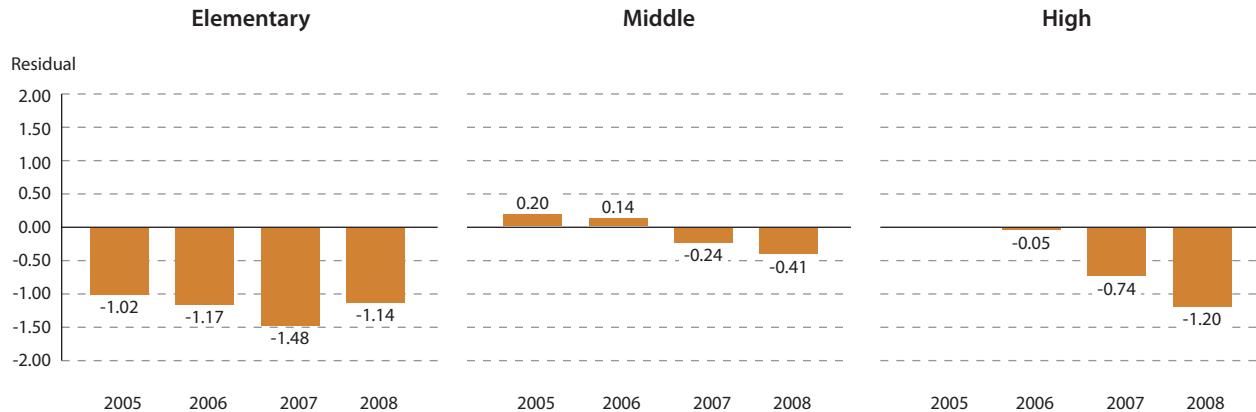
³ For the count of "positive residuals" rows, the decile rank is the average rank for the three education levels.

NOTES: **Positive average change values and decile ranks** in the upper half (1–5) appear in color. **The reported percent of low-income test takers at the high school level in 2005 was unreliable for this district and residual results were suppressed.**

San Bernardino City Unified School District CALIFORNIA

Standardized Residuals for Mathematics

Standardized residuals¹ for regressions of the percentage of students in the district scoring at or above proficient in mathematics, controlling for district poverty level: 2005–2008



SOURCE: Analysis of state test data.

¹ Positive residuals indicate higher-than-expected performance, and negative residuals indicate lower-than-expected performance, given the district's poverty level. Residuals are expressed in standard units. Regressions were weighted by district size.

NOTES: See below for details.

Standardized residuals¹ for regressions of the percentage of students in the district scoring at or above proficient in mathematics, controlling for district poverty level: 2005–2008

	2005	2006	2007	2008	Average change	Decile rank ^{2,3}
Elementary	-1.02	-1.17	-1.48	-1.14	-0.07	8.00
Middle	0.20	0.14	-0.24	-0.41	-0.22	6.00
High	†	-0.05	-0.74	-1.20	-0.58	8.50
Count of positive residuals in mathematics/ total available	1/2	1/3	0/3	0/3	0/3	7.50
Count of positive residuals in reading and mathematics/total available	2/4	2/6	0/6	0/6	1/6	7.42

SOURCE: Analysis of state test data.

— Not available. † Data were suppressed due to unreliability. See methodology section.

¹ Positive residuals indicate higher-than-expected performance, and negative residuals indicate lower-than-expected performance, given the district's poverty level. Residuals are expressed in standard units. Regressions were weighted by district size.

² Average decile rank of 2007 and 2008 residuals. See methodology section.

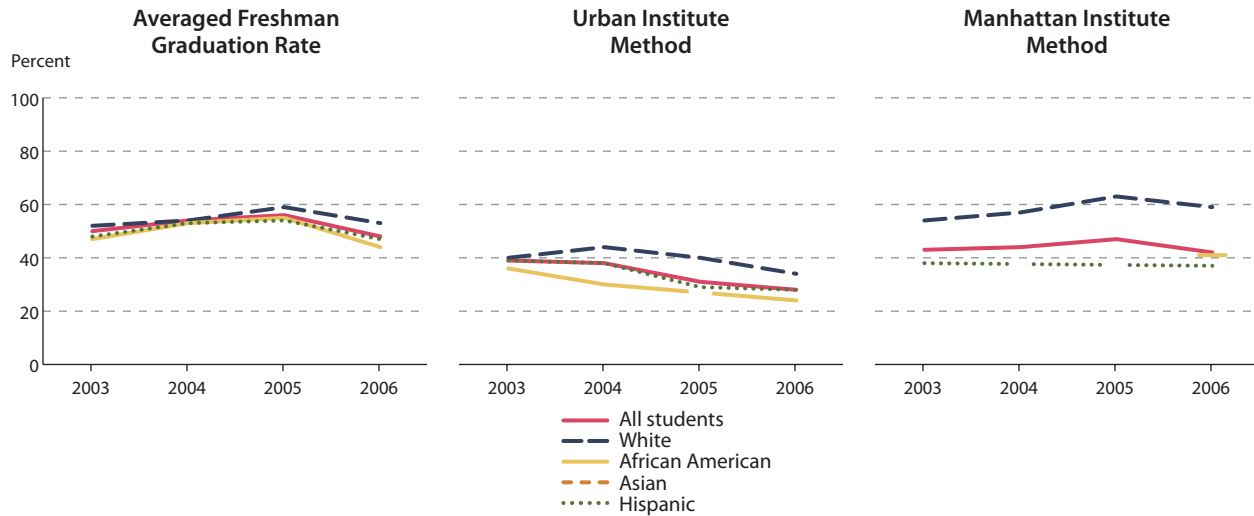
³ For the count of "positive residuals" rows, the decile rank is the average rank for the three education levels.

NOTES: **Positive average change values and decile ranks** in the upper half (1–5) appear in color. **The reported percent of low-income test takers** at the high school level in 2005 was unreliable for this district and residual results were suppressed.

San Bernardino City Unified School District CALIFORNIA

High School Graduation Rates

Three estimated high school graduation rates: 2003–2006



Estimated high school graduation rates for the classes of 2003–2006

	2003	2004	2005	2006	Change			Average change
					2003–2006	2004–2006	2005–2006	
Averaged Freshman Graduation Rate								
All	50	54	56	48	-2	-6	-8	0
African American	47	53	55	44	-3	-8	-11	-1
Asian	†	†	†	†	†	†	†	†
Hispanic	48	53	54	47	-1	-6	-7	0
White	52	54	59	53	1	-1	-6	1
Urban Institute method¹								
All	39	38	31	28	-11	-10	-3	-4
African American	36	30	†	24	-12	-6	†	-4
Asian	†	†	†	†	†	†	†	†
Hispanic	39	38	29	28	-11	-10	-1	-4
White	40	44	40	34	-6	-10	-6	-2
Manhattan Institute method¹								
All	43	44	47	42	-1	-2	-4	0
African American	†	†	†	41	†	†	†	†
Asian	†	†	†	†	†	†	†	†
Hispanic	38	†	†	37	0	†	†	0
White	54	57	63	59	5	2	-3	2

SOURCE: Analysis of data from the U.S. Department of Education, National Center for Education Statistics, Common Core of Data (CCD).

— Not available. † Data were suppressed due to unreliability or if a subgroup represented less than 5 percent of the population. See methodology section.

¹ The Urban Institute method is also known as Swanson's cumulative promotion index (SCPI) and the Manhattan Institute method is also known as Greene's graduation indicator (GGI).

NOTES: **Gaps in lines** represent missing or suppressed data. **Positive change values** appear in color. Details on the calculation of **average change** are found in the methodology section.

San Bernardino City Unified School District

CALIFORNIA

College Readiness Data

Test scores and participation rates for college readiness examinations: 2005–2008

	2005	2006	2007	2008	Change			Average change
					2005–2008	2006–2008	2007–2008	
SAT Reasoning Test¹								
Mean total score (reading and mathematics)								
All	876	885	873	864	-12	-21	-9	-5
African American	802	841	830	808	6	-33	-22	1
Asian	894	957	924	963	69	6	39	17
Hispanic	854	854	836	838	-16	-16	2	-7
White	986	992	1,004	972	-14	-20	-32	-3
Participation rate								
All	34	36	43	45	11	9	2	4
African American	35	34	45	48	13	15	4	5
Asian	†	†	61	46	†	†	-15	-15
Hispanic	28	33	38	43	15	10	5	5
White	32	29	37	35	3	6	-2	2
ACT¹								
Mean composite score (English, reading, mathematics, and science)								
All	18	17	19	19	1	2	0	0
African American	17	†	†	17	0	†	†	0
Asian	†	†	†	†	†	†	†	†
Hispanic	18	†	†	19	0	†	†	0
White	20	†	†	23	3	†	†	1
Participation rate								
All	6	28	10	8	2	-19	-1	-1
African American	10	†	†	10	0	†	†	0
Asian	†	†	†	8	†	†	†	†
Hispanic	5	†	†	7	2	†	†	1
White	3	†	†	7	4	†	†	1
Advanced Placement (AP) (all subjects)²								
Percent of tests taken with scores of 3 or above								
All	31	36	25	23	-8	-12	-2	-3
African American	24	28	17	13	-10	-15	-4	-4
Asian	30	34	22	17	-13	-17	-5	-5
Hispanic	34	36	24	25	-10	-11	1	-4
White	32	42	36	31	-1	-11	-5	-1
Participation rate								
All	12	15	14	18	6	3	4	2
African American	5	6	9	11	6	4	2	2
Asian	†	†	†	†	†	†	†	†
Hispanic	13	16	15	20	7	4	5	2
White	11	11	11	12	1	0	1	0

SOURCE: Analysis of data from the Common Core of Data (CCD), ACT, and the College Board (copyright © 2005–2008 The College Board. www.collegeboard.com).
— Not available.

† Test scores were suppressed if fewer than 15 students took the test. Participation rates were suppressed due to unreliability or if the subgroup represented less than 5 percent of district enrollment in the relevant grades. See methodology section.

¹ Describes the most recent test results for graduating seniors.

² Describes test results for juniors and seniors taking any AP test in the given year.

NOTES: **Subgroup participation rates** may not reflect the “all students” rate due to some test takers not reporting their race/ethnicity. **Positive change values** appear in color. Details on the calculation of **average change** are found in the methodology section. **CCD data for 2008** were not available at the time of this analysis; participation rates for 2008 were estimated using 2007 enrollment data.

San Bernardino City Unified School District

CALIFORNIA

Adequate Yearly Progress (AYP)

Overall AYP performance: 2005–2008

Subject/level	2005	2006	2007	2008
Percent of schools meeting AYP targets				
District	25	29	29	23
State	61	67	67	52
District overall AYP status	N	N	N	N

SOURCE: Data collected from state websites and education agencies.

— Not available.

NOTES: “Y” indicates the district met overall AYP targets. “N” indicates the district did not meet overall AYP targets.

District AYP status by subject and subgroup¹

	2008: Met proficiency targets	2008: Met participation targets
English language arts		
All students	N	Y
African American	N	Y
Asian	Y	Y
Hispanic	N	Y
White	Y	Y
Filipino	Y	Y
Pacific Islander	—	Y
American Indian/Alaska Native	Y	Y
Low income	N	Y
English language learners	N	Y
Students with disabilities	N	Y
Mathematics		
All students	N	Y
African American	N	Y
Asian	Y	Y
Hispanic	N	Y
White	Y	Y
Filipino	Y	Y
Pacific Islander	—	Y
American Indian/Alaska Native	Y	Y
Low income	N	Y
English language learners	N	Y
Students with disabilities	N	Y

SOURCE: Data collected from state websites and education agencies.

— Not available.

¹ Data for the latest year available.

NOTES: “Y” indicates yes. “N” indicates no.

Technical Notes and Methodology

Understanding the Data Report

This data report contains all of the data collected and analyzed for selection of The 2009 Broad Prize finalists. It does not contain summaries that compare the district with other districts, nor any additional quantitative or qualitative data collected or analyzed for selection of the winner from among the finalists. However, summary tables containing results for all 100 eligible districts and the 3 previous years' winners are available at www.broadprize.org.

The Broad Prize finalists are determined by a panel of education experts from around the country, based on a review of the data and analyses for the 100 Broad Prize-eligible districts. There is neither a strict formula nor set of weighting factors applied to the data. Each Broad Prize Review Board member considers all of the data and analyses available each year and, based on his or her knowledge and expertise, selects five finalists. Both performance as of the most recent year and improvement over the four most recent years on the various measures included in this report are considered by the Review Board.

The rest of this section discusses the data collection and analysis procedures used to produce the data report. First, it describes the criteria and data sources for identifying the eligible districts. Second, it reviews each of the quantitative achievement measures used by the Review Board in March 2009 to identify the five finalists and the data on which the measures were based.

Eligible Districts

To be eligible for The Broad Prize, school districts must meet certain criteria set by The Broad Foundation related to size, poverty and urbanicity. Winners from the previous three years are ineligible. The criteria for eligibility are:

- All K–12 districts serving more than 100,000 students (25 districts).
- All K–12 districts serving between 35,000 and 99,999 students in which at least 40 percent of students are eligible for free or reduced-price school lunch (FRSL), in which at least 40 percent of student enrollment comes from minority groups, and which have an urban designation (Locale Code 11, 12, or 21 in the CCD data¹) (63 districts).
- The largest urban districts in states with no districts meeting the above criteria, as long as the district has at least 20,000 students (11 districts).
- The next largest districts in the nation meeting the criteria of 40 percent FRSL, 40 percent minority and an urban designation. The purpose of this criterion was to bring the total number of districts to 100 (1 district).

¹ As of 2007, CCD locale codes have changed: code 11 represents a large city; code 12 represents a mid-size city; and code 21 represents a large suburb. Sable, J. (2008). *Documentation to the NCES Common Core of Data Local Education Agency Universe Survey: School Year 2006–07 Version 1a* (NCES 2009-301). National Center for Education Statistics, Institute of Education Sciences, U.S. Department of Education. Washington, DC.

Technical Notes and Methodology

For The 2009 Broad Prize, the 2006, 2007 and 2008 winners, Boston, New York City, and Brownsville, respectively, were removed from eligibility and the 2005 winner (Norfolk) became eligible again. Data for the non-eligible previous winners were also collected and reported to The Broad Prize Review Board.

The 100 eligible school districts are located in 38 states and the District of Columbia. Twelve states—Delaware, Hawaii, Idaho, Maine, Massachusetts, Montana, New Hampshire, North Dakota, South Dakota, Vermont, West Virginia and Wyoming—have no eligible districts this year. Hawaii is ineligible because it has a statewide school system.

Data Used for Measures of Student Achievement

Detailed data on various measures of student achievement were obtained for each district, using federal, state and other sources. Wherever possible, data were collected by grade level, race/ethnicity (African American, Asian, Hispanic and White), and income status (low income and non-low income). The achievement data examined included performance on state achievement tests, graduation rates based on federal counts of high school enrollments and completions, college readiness data obtained from the College Board and ACT, and information on Adequate Yearly Progress (AYP).

Reading and Mathematics Proficiency as Determined by State Tests

Key indicators of student performance are scores on state-mandated achievement tests and trends in scores over time. Test score data in reading and mathematics were collected from each state for 2005 through 2008.² These data were used to calculate the percentage of students in each district scoring at or above proficiency on their state tests in reading and mathematics in each grade. Weighted by the number of test takers at each grade level, these data on student achievement were aggregated across elementary grades (third through fifth), middle grades (sixth through eighth), and high school grades (ninth through 12th), where available. These state assessment data were analyzed (using methods described later) to calculate actual versus expected performance, to directly compare district with state performance, and to measure gaps and changes in gaps between low- and non-low-income students as well as between White and African-American students and White and Hispanic students.

Important Note Regarding State Test Data

Because states establish their own assessment and proficiency standards, districts' performance on state tests cannot be directly compared across states. To provide context for these data, summary tables containing information on state performance on the National Assessment of Education Progress (NAEP), the 2007 NAEP Trial Urban District Assessment (TUDA), and a 2006 Northwestern Evaluation Association (NWEA) proficiency-standards mapping study are available online at www.broadprize.org but are not included in this data report.

² The data were provided directly by state agencies or downloaded from their websites.

Technical Notes and Methodology

High School Graduation Rates

Another key measure of student performance is the graduation rate. While using longitudinal student data generates the most accurate graduation rate, such data are not currently available in most states. In the absence of longitudinal data, cross-sectional data can be used to generate estimates of rates of high school graduation. There are several methods generally considered reliable estimators of graduation rates, three of which are used in this report and are described in the next section on methods of analysis.

In order to generate estimates that are comparable across the 100 Broad Prize-eligible districts, MPR obtains diploma counts and enrollment data for the districts from the federal Common Core of Data (CCD). The data used to create graduation rate estimates include total and subgroup enrollments and completion counts for each district for the high school classes of 2003 through 2006 (the most recent years that were available at time of analysis). The different methods also employ grade-level enrollment data, but the methods vary in terms of the specific years of enrollment data used in the calculations.

College Readiness Data

District-level measures of the college readiness of their students include SAT and ACT mean scores and participation rates. These two tests are designed to assess readiness for college-level work. Scale scores for each subject (reading and math) assessed by the SAT range from 200 to 800. (Writing scores were not included because data were not available for all four years covered by this analysis.) Scale scores for the composite ACT test (covering English, mathematics, reading and science) range from 1 to 36. With district permission, the College Board and ACT provided mean test scores for each district for 2005 through 2008, along with the number of seniors who had ever taken the test (regardless of when they took the test during high school). The most recent test scores were provided.

Another measure of college readiness is the extent to which students take and pass Advanced Placement (AP) examinations. These examinations provide a standardized measure of student performance in college-level courses taken while in high school. AP grades are reported on a five-point scale:

- 5 = Extremely well qualified
- 4 = Well qualified
- 3 = Qualified (equivalent to passing)
- 2 = Possibly qualified
- 1 = No recommendation

Again with permission from each district, the College Board provided data for the district for 2005 through 2008 on the number of AP examinations at each score level and on the number of juniors and seniors who took the test. MPR staff used these numbers to calculate percentages of AP examinations with scores of three or above (equivalent to pass rates) for each district.

Technical Notes and Methodology

The College Board and ACT do not calculate test participation rates. MPR staff calculated participation rates using enrollment data obtained from the federal Common Core of Data (CCD) for 11th- and 12th-graders, as appropriate, in combination with the number of students taking the different tests.

Adequate Yearly Progress (AYP) Data

The data presented indicate the percentage of schools in each district and state that met federal AYP requirements in 2005 through 2008 under the No Child Left Behind (NCLB) legislation. Also presented is an indicator of whether the district met its overall AYP target in the given year and additional AYP detail for student subgroups, where available. These data were obtained from state and local education agency websites.

Data Analysis Methods

The 2009 Broad Prize data report presents data collected on district characteristics, background on state tests and AYP. In addition, MPR staff analyzed the above-described data on student achievement to develop measures of the following: achievement gaps, district proficiency rates compared with the state, standardized residuals, graduation rates and college readiness. Trend data are presented where available, as are “performance” and “improvement” measures. Each data report section is explained here and the relevant report page numbers are indicated in parentheses. Additional explanatory notes are included as footnotes in the data report itself.

MPR staff analyzed the data on student achievement described above to develop measures of the following:

- District and state proficiency rates on state reading and mathematics tests by education level (elementary, middle and high school) for all students, racial/ethnic subgroups—African American, Asian, Hispanic and White—and low-income and non-low-income subgroups.
- Achievement gaps between Whites and other racial/ethnic groups—African Americans and Hispanics—and between low-income and non-low-income students, and the progress that is being made in closing these gaps.
- Comparing the performance of all students, African-American, Hispanic, and low-income students in a district with their state peers, at the proficient or above level, and at the below proficient, proficient, and advanced levels on state tests.
- Expected versus actual performance on state tests, taking into consideration differences in state tests and the proportion of low-income students in each district.
- High school graduation rates.
- College readiness.

These are explained below.

Technical Notes and Methodology

Background Information (page 2)

Description of District: 2004–2007

Background information on the finalists is presented in this section. These data were generally obtained from the U.S. Department of Education’s Common Core of Data (CCD). Demographic percentages were calculated using enrollment counts. The minority percentages were calculated as the sum of non-White enrollments divided by the total district enrollment. Percent minority may not equal 100 percent minus percent White due to the small amounts of missing race/ethnicity data in some districts.

The information in the table is organized as follows:

First column: Lists the district characteristics, student characteristics and types of expenditures shown in the table

Remaining columns: Lists data for each year for which data were available (2004, 2005, 2006 and 2007)

State Test Information: 2005–2008

Key indicators of student performance include scores on state-mandated achievement tests and trends in scores over time. The state test information shows the tests and grades that were included in The 2009 Broad Prize analysis. The table notes indicate whether any tests were not comparable with other years, and may provide additional information. Non-comparable tests were not included in calculations of “change” or “average change” on pages 8 through 13. Because of the “relative” nature of standardized residuals, however, data for all tests were included in calculations of “overall performance” and “average change” on pages 14 and 15.

The information in the table is organized as follows:

First column: Lists the subject (reading and math) and level (elementary, middle and high school)

Second column: Specifies the test

Remaining columns: Specifies the grades included in the analysis for 2005, 2006, 2007, and 2008

Trends in Proficiency Rates (pages 3–7)

Test score data in reading and mathematics were collected from each state for 2005 through 2008. These data were used to calculate the percentage of students scoring at or above proficiency on their state tests in reading and mathematics in each grade. Weighted by the number of test takers at each grade level, these data on student achievement were aggregated across elementary grades (third through fifth), middle grades (sixth through eighth), and high school grades (ninth through 12th), where available.

District and state trends in proficiency are shown for all students in reading and math (page 3). Trends are also disaggregated by race/ethnicity (pages 4–5) and income status (pages 6–7) for both the district and state.

Technical Notes and Methodology

The “state” proficiency rates in these analyses generally excluded the district’s results. That is, unless otherwise indicated, district proficiency rates were removed from state averages to produce “rest of state” proficiency rates for comparison purposes. This approach was particularly important in cases where very large eligible districts enrolled a significant proportion of the population in a state and would otherwise have been compared largely with itself. In states with multiple eligible districts, the “state” proficiency rates will vary, because each district was compared separately with all other districts in the state except itself.

Non-comparable test data are not included in trend lines. Data were suppressed if a subgroup represented less than 5 percent of the test takers in a subject at a level (elementary, middle, high school) or if the data were unreliable.

Trends in Overall Reading and Mathematics Proficiency (page 3)

Six different trend charts, with data for 2005, 2006, 2007, and 2008, are shown as follows:

- Left side: District reading and mathematics proficiency trend lines for all students at the elementary, middle and high school levels
- Right side: State reading and mathematics proficiency trend lines for all students at the elementary, middle and high school levels

Race/Ethnicity Trends in Reading and Mathematics Proficiency (pages 4–5)

For each subject, six different trend charts, with data for 2005, 2006, 2007, and 2008, are shown as follows:

- Left side: District proficiency trend lines for White, African-American, Asian, and Hispanic students at the elementary, middle and high school levels
- Right side: State proficiency trend lines for White, African-American, Asian, and Hispanic students at the elementary, middle and high school levels

Income Status Trends in Reading and Mathematics Proficiency (pages 6–7)

For each subject, six different trend charts, with data for 2005, 2006, 2007, and 2008, are shown as follows:

- Left side: District proficiency trend lines for all students, low-income, and non-low-income students at the elementary, middle and high school levels
- Right side: State proficiency trend lines for all students, low-income, and non-low-income students at the elementary, middle and high school levels

Proficiency Data Summaries (pages 8 and 10)

Percentages of students scoring at or above proficiency on the state tests between 2005 and 2008 are shown for reading on page 8 and for math on page 10 for both the district and the state. As indicated above, the “state” proficiency rates in these analyses generally excluded the district’s results. That is, unless otherwise indicated, district proficiency rates were removed from state averages to produce “rest of state” proficiency rates for comparison purposes.

Technical Notes and Methodology

The tables also show calculations of improvement over time. Simple change is calculated as the difference between 2005 and 2008, between 2006 and 2008, and between 2007 and 2008. Where data for one or two years in the pair were not available, not comparable, or suppressed, these change calculations could not be performed.

In addition, improvement or “average change” was calculated as the slope of the best fit line among the available data points for 2005 through 2008. The slope was generally determined by regressing the available proficiency rates on year. If only one data point was available, or if data were missing for both 2007 and 2008, average change was not calculated.

Data could be missing either because they were not available (indicated by “—”) or because they were suppressed (indicated by “+”). Data were suppressed if a subgroup represented less than five percent of the test takers in a subject at a level (elementary, middle, high school) or if the data were unreliable. Data that were not comparable with other years, due, for example, to changes in the state test as described above, appear in italics and were treated in calculations as missing data (and the missing result is indicated by “#”).

Calculations were performed on unrounded numbers. Positive change values appear in color.

Reading and Mathematics Proficiency Data Summary (pages 8 and 10)

The information in the tables is organized as follows:

First column:	Subgroups are specified for the district and rest of state for each of the three levels (elementary, middle and high school)
Second column:	Proficiencies are specified for the 2005 academic year
Third column:	Proficiencies are specified for the 2006 academic year
Fourth column:	Proficiencies are specified for the 2007 academic year
Fifth column:	Proficiencies are specified for the 2008 academic year
Sixth column:	Change in proficiency is shown for the 2008 academic year minus the 2005 academic year
Seventh column:	Change in proficiency is shown for the 2008 academic year minus the 2006 academic year
Eighth column:	Change in proficiency is shown for the 2008 academic year minus the 2007 academic year
Ninth column:	The “average change” calculation is shown. “Average change” was calculated as the slope of the best fit line among the available data points for 2005 through 2008.

Proficiency Gaps (pages 9 and 11)

Measures of gap closures are shown for reading on page 9 and for math on page 11. Two types of comparisons were made when calculating achievement gaps:

Racial/Ethnic Gaps:	These compared the performance of African-American and Hispanic students with that of White students.
Income Gaps:	These compared the performance of low-income students with that of non-low-income students.

Three types of gaps were measured:

Technical Notes and Methodology

Internal District Gap

This measure calculates the gap in performance between a district's disadvantaged group and the district's advantaged group. Some caution must be exercised in comparing internal gaps across districts because these comparisons may be distorted by the following factors:

- The relative absence of an advantaged group in some districts (e.g., few White or few non-low-income students). To address this issue, internal gaps were not calculated in districts where either of the groups being compared represented less than 5 percent of the district's test-takers in a given subject and at a given level.
- Differences between districts in the composition of the "advantaged" or "disadvantaged" groups (e.g., high-income Whites in one district and moderate-income Whites in another).
- Higher than average performance or improvement by the advantaged group in some districts and lower than average performance or improvement by the advantaged group in others (which could cause districts with lower performing advantaged students to appear to be doing a better job of "closing the gap").
- Ceiling or floor effects, which can distort the comparison of gaps across states.

Gaps are represented by negative numbers and the closing of such gaps is represented by positive numbers. For example, if a district's African-American students perform 30 percentage points below the district's White students, this gap is represented by -30 . If the gap closes to -10 in subsequent years, then the gap closure measure is the later year's gap minus the earlier year's gap (-10 minus -30 equals $+20$), meaning that the gap between African-American and White students has closed by 20 percentage points.

Internal District versus Internal State Gap

This measure corresponds to the district's internal gap minus the state's internal gap. The district's internal gap is defined as the performance of the district's disadvantaged group minus the performance of the district's advantaged group. The state's internal gap is defined as the performance of the state's disadvantaged group minus the performance of the state's advantaged group. As described above, the "state" internal gaps against which district internal gaps were compared generally excluded the district's results. That is, unless otherwise indicated, district proficiency rates were removed from state averages to produce "rest of state" values for comparison purposes.

Positive numbers indicate that the district outperformed the state on the measure. For example, if the district's Hispanic students are performing 10 percentage points below the district's White students, but the state's Hispanic students are performing 15 percentage points below the state's White students, then the internal district gap is 5 percentage points smaller than the internal state gap.

By similar reasoning, a positive change in this measure over time for Hispanic students would indicate that the district's Hispanics are improving faster relative to the district's Whites than the state's Hispanics are improving relative to the state's Whites.

Technical Notes and Methodology

External Gap: District Disadvantaged versus State Advantaged

This measure was used to compare the performance of the district's disadvantaged group with that of the state's advantaged group. Thus, if 30 percent of District A's Hispanic students, 40 percent of District B's Hispanic students, and 50 percent of the state's White students are proficient on the state test, District A's external gap for Hispanics is 30 percent minus 50 percent (or -20 percentage points), and District B's external gap for Hispanics is 40 percent minus 50 percent (or -10 percentage points). As described above, the "state" internal gaps against which district internal gaps were compared generally excluded the district's results. That is, unless otherwise indicated, district proficiency rates were removed from state averages to produce "rest of state" values for comparison purposes. Note that comparing two districts' external gaps in the same state is virtually the same as comparing the performance of their disadvantaged groups except that the "state's" advantaged proficiency against which the district's disadvantaged group was compared was not exactly the same for each district.

External gap statistics are generally negative numbers, but improvement in external gaps (improvement in the performance of the district's disadvantaged students relative to the state's advantaged students) are shown as positive numbers.

An illustration of the three achievement gap measures follows:

	2005 Proficiency Rate		2008 Proficiency Rate	
	District	State	District	State
Low-income students	20	25	35	30
Non-low-income students	50	60	55	65

In this example, the gap measures would be:

Internal District Gap

- 2005 internal gap: -30 (equals 20 minus 50)
- 2008 internal gap: -20 (equals 35 minus 55)
- 2005–2008 change in internal gap: $+10$. This means that the district has closed its income gap by 10 percentage points since 2005.

Internal District versus Internal State Gap

- 2005 internal state gap: -35 (equals 25 minus 60)
- 2008 internal state gap: -35 (equals 30 minus 65)
- 2005–2008 change in internal state gap: 0 . This means that the state's income gap has not changed since 2005.
- 2005 internal district vs. internal state gap: $+5$ (equals -30 minus -35)
- 2008 internal district vs. internal state gap: $+15$ (equals -20 minus -35)
- 2005–2008 change in internal district vs. internal state gap: $+10$. This means that the district's low-income gap has improved 10 percentage points more than its state gap since 2005.

Technical Notes and Methodology

External Gap: District Disadvantaged versus State Advantaged

- 2005 external gap: -40 (equals 20 minus 60)
- 2008 external gap: -30 (equals 35 minus 65)
- 2005–2008 change in external gap: +10. This means that the district's low-income performance has improved relative to the performance of the state's non-low-income group by 10 percentage points since 2005.

The tables also show calculations of improvement over time. Simple change is calculated as the difference between 2005 and 2008, between 2006 and 2008, and between 2007 and 2008. Where data for one or two years in the pair were not available, not comparable, or suppressed, these change calculations could not be performed.

In addition, improvement or "average change" was calculated as the slope of the best fit line among the available data points for 2005 through 2008. If only one data point was available, or if data were missing for both 2007 and 2008, average change was not calculated. Data could be missing either because they were not available (indicated by "—") or because they were suppressed (indicated by "†"). Data were suppressed if a subgroup represented less than 5 percent of the test takers in a subject at a level (elementary, middle, high school) or if the data were unreliable. Data that were not comparable with other years, due, for example, to changes in the state test as described above, appear in italics and were treated in calculations as missing data (and the missing result is indicated by "‡"). Calculations were performed on unrounded numbers.

An internal district gap was considered to be closing if the district's disadvantaged group proficiency was increasing and the district's advantaged group proficiency was either steady or increasing. The gap was closing because the district's disadvantaged group proficiency was increasing at a faster rate than the district's advantaged group proficiency.

An internal district vs. internal state gap was considered to be closing if the district's disadvantaged group proficiency was increasing, the district's advantaged group proficiency was either steady or increasing, and the internal district gap was closing at a faster rate than the state internal gap.

An external gap was considered to be closing if the district's disadvantaged group proficiency was increasing at a faster rate than the state's advantaged group proficiency.

When a gap is considered to be closing, the average change value appears in color.

To identify districts with the smallest gaps, decile ranks based on gaps for all districts in a state were computed. Decile ranks could only be calculated for internal district gaps and ranged from 1 for the smallest gaps to 10 for the largest gaps in a state. Gaps that had a decile rank of 1 or 2 were considered to be "small." Decile ranks of 1 or 2 appear in color.

Technical Notes and Methodology

Important Note Regarding Achievement Gap Data

Caution must be used when looking at the gap measures for districts across states because the three gap measures are not standardized and are even more vulnerable than are standardized measures to ceiling and floor effects.

Reading and Math Proficiency Gaps (pages 9 and 11)

The information in the tables is organized as follows:

First column:	The internal district gap, internal district vs. internal state gap, and external gap are specified with regard to comparing the disadvantaged vs. advantaged groups (African-American vs. White, Hispanic vs. White, and low-income vs. non-low-income students) at each of the three levels (elementary, middle and high school)
Second column:	Gaps are specified for the 2005 academic year
Third column:	Gaps are specified for the 2006 academic year
Fourth column:	Gaps are specified for the 2007 academic year
Fifth column:	Gaps are specified for the 2008 academic year
Sixth column:	Change in the gap is shown for the 2008 academic year minus the 2005 academic year
Seventh column:	Change in the gap is shown for the 2008 academic year minus the 2006 academic year
Eighth column:	Change in the gap is shown for the 2008 academic year minus the 2007 academic year
Ninth column:	The “average change” calculation is shown. “Average change” was calculated as the slope of the best fit line among the available data points for 2005 through 2008.
Tenth column:	The within-state decile rank of the 2008 internal district gap is shown. Decile ranks range from 1 for the smallest gaps in the state to 10 for the largest.

Comparisons of District and State Performance (pages 12 and 13)

Tables on these pages compare the performance of seven subgroups (all students, African-American, Asian, Hispanic, White, low-income, and non-low-income students) in a district with their state peers in reading (on page 12) and mathematics (on page 13). Unlike the regression analyses, which appear on pages 14 and 15, these analyses directly compare district and state performance and do not take into account district poverty levels. These comparisons focus on the district’s performance on the state test at the below proficient, proficient and advanced levels, as well as at the combined proficient or above level.³

The table shows district and state performance in 2008 across the four proficiency categories as well as average change in these categories for the years 2005, 2006, 2007 and 2008. “Average change” was calculated as the slope of the best fit line among the available data points for 2005 through 2008. The slope was generally determined by regressing the available proficiency rates on year. If only one data point was available, or if data were missing for both 2007 and 2008, average change was not calculated.

³ Below proficient” may combine any proficiency categories the state defines as not meeting proficiency standards. The “advanced” level was defined as the highest performance level above “proficient” on a state’s test.

Technical Notes and Methodology

The “state” proficiency rates against which the district proficiency rates were compared in this section generally excluded the district’s results. That is, unless otherwise indicated, district proficiency rates were removed from state averages to produce “rest of state” proficiency rates for comparison purposes. This approach was particularly important in cases where very large eligible districts enrolled a significant proportion of the population in a state and would otherwise have been compared largely with itself. In states with multiple eligible districts, the “state” proficiency rates will vary, because each district was compared separately with all other districts in the state except itself.

The 2008 performance and the improvement, or “average change,” measures for all subgroups within each district were compared with the performance and improvement of their peers in the rest of the state. At the proficient, advanced, and proficient or above levels, the district outperformed the state when the percentage of students performing at that level in 2008 was *greater* than the state’s. Similarly, at these same levels, the district out-improved the state when the average change rate was *greater* than the state’s. At the below proficient level, the district outperformed the state when the percentage of students performing at that level in 2008 was *lower* than the state’s, and the district out-improved the state when the average change rate was *lower* than the state’s. Outperformance comparisons were performed on unrounded numbers, and instances of the district outperforming or out-improving the state by .5 percent age points or more appear in color.

The lower, shaded portion of the table shows the counts of district outperformances out of the number of available comparisons for each student group.

Test data were suppressed if they were deemed unreliable or if the subgroup being reported at a given level represented less than 5 percent of the test-takers at that level. Data that were not comparable with other years, due, for example, to changes in the state test as described above, appear in italics and were treated in calculations as missing data (and the missing result is indicated by “+”). Average change calculations were performed on unrounded numbers.

Comparisons of District and State Performance in Reading and Mathematics (pages 12 and 13)

The information in the tables is organized as follows:

- First column: Subgroups are specified for the district and rest of state for each of the three levels (elementary, middle and high school)
- Second column: Percentages of students performing in the below proficient category are specified for the 2008 academic year
- Third column: Percentages of students performing in the proficient category are specified for the 2008 academic year
- Fourth column: Percentages of students performing in the advanced proficiency category are specified for the 2008 academic year

Technical Notes and Methodology

- Fifth column: Percentages of students performing in the proficient or above category are specified for the 2008 academic year
- Sixth column: The “average change” in students performing in the below proficient category is shown. “Average change” was calculated as the slope of the best fit line among the available data points for 2005 through 2008.
- Seventh column: The “average change” in students performing in the proficient category is shown. “Average change” was calculated as the slope of the best fit line among the available data points for 2005 through 2008.
- Eighth column: The “average change” in students performing in the advanced proficiency category is shown. “Average change” was calculated as the slope of the best fit line among the available data points for 2005 through 2008.
- Ninth column: The “average change” in students performing in the proficient or above category is shown. “Average change” was calculated as the slope of the best fit line among the available data points for 2005 through 2008.

Standardized Residuals for Reading and Mathematics (pages 14 and 15)

The trends for standardized residuals in reading and math at the elementary, middle and high school levels are shown on pages 14 and 15.

An ordinary least squares regression (OLS) analysis was conducted to determine the extent to which each Broad Prize-eligible district performed better or worse than other districts in its state given the district’s percentage of low-income students. Specifically, the dependent variable in the regression analysis was the percentage of test takers in a district who were proficient or above on the state test. The independent variable was the percentage of test takers at the relevant level in the district who were low income. The regressions were weighted by district size, as measured by enrollment. This approach gives greater weight in the regressions to larger districts, and avoids possible undue influence of very small districts on the regression results. A separate regression was run for each year of data and each subject (reading and mathematics) for each level (elementary, middle, and high school) within each state.

Running the regressions required obtaining achievement data for all districts in the state, as well as data on the income status of test takers. In a few cases where data were available for the state and the eligible district, but were not available for all districts in the state, or where data on the proportion of test takers who were low income were not available, the regressions could not be run.

For each district, the expected or predicted proficiency level based on the regression was calculated. The difference between the district’s actual percentage of students who scored at or above proficiency and the predicted or expected value is the residual. A positive residual indicates that the district is performing better than expected on the state test given their percentage of low-income students taking the test, while a negative residual indi-

Technical Notes and Methodology

icates lower-than-expected performance. It should be emphasized that residuals are relative performance measures. A district's performance was assessed relative to that of other districts in the state, not in absolute terms.

Some states changed tests over the period under review, and tests differed from state to state. Consequently, the interpretation of residuals varies. To allow for year-to-year comparisons, separate regressions for each year of data were run. In addition, in order to have a measure with greater comparability, The Broad Prize methodology uses "standardized residuals." A district's standardized residual is calculated by dividing its residual by the standard deviation of all residuals from the state regression.

As an example, a district in Arkansas may have a residual in elementary reading of 5.7 (meaning that they had 5.7 percent more students reach proficiency than their "expected level" given their district's poverty). At the same time, a district in Wisconsin may also have a residual of 5.7 in elementary reading. The assessment of how well each district is performing, however, may not be the same even though both have the same residual. If the majority of districts in Arkansas are within 6 percentage points of the expected performance level, while the majority of districts in Wisconsin are within 2 percentage points of the expected level, then the Wisconsin district is performing much better compared with its peers than the Arkansas district is compared with its peers. Standardizing the residuals helps account for differences in variability across states.

Caution must be exercised in comparing standardized residuals. For example, a district that performs above average in a state that ranks below the national average on NAEP may be performing no better than a district that performs below average in a state that ranks above the NAEP national average.

Separate residuals were calculated for each subject (reading and mathematics), level (elementary, middle and high school) and year (2005, 2006, 2007, and 2008). The table on the lower half of the page shows the standardized residuals values in reading or mathematics at the elementary, middle and high school levels, as well as "average change" and "decile rank." Improvement or "average change" in residuals was calculated as the slope of the best fit line among the available data points for 2005 through 2008. The slope was generally determined by regressing the available standardized residuals on year. If only one data point was available, or if residuals were missing for both 2007 and 2008, average change was not calculated. Decile ranks based on standardized residuals for all districts in a state regression were computed and the average decile ranks for 2007 and 2008 are presented. These average decile ranks were calculated separately by level (elementary, middle, and high school) and subject, and then averaged to produce a single performance measure for each eligible district. Decile ranks of 1–5, which represent the top half of residuals in the state, appear in color.

The table on the lower half of each page also shows the count of positive residuals for reading or mathematics and the count of available measures for that subject. Both tables show the count of positive residuals as well as the count of available residual measures for both subjects (reading and math) combined. Under the "decile rank"

Technical Notes and Methodology

column, these rows show the average rank for the three education levels. Positive “average change” values and decile ranks in the upper half are shown in color.

Important Note Regarding the Comparison of Residuals for Different Districts

The analysis provides information on both performance and improvement. In theory, districts with high initial performance levels might be expected to have lower levels of improvement. A district that performed consistently above expectations during all four years, but did not improve, could still be thought of as consistently high performing.

In addition, because states use different tests and different standards of proficiency, individual states may be subject to “floor” or “ceiling” effects. If proficiency levels are generally very high in a state (near 90 percent, for example), then high-performing districts may not be able to show their relative achievement because their proficiency level cannot increase above 100 percent. Similarly, if state proficiency levels are very low, then the relative achievement of the higher performers may be understated because the lower performing districts cannot fall below zero percent.

Standardized Residuals Data for Reading and Mathematics (pages 14 and 15)

The upper half of each page shows three different trend bar charts, with standardized residuals for reading or mathematics for all students in 2005, 2006, 2007, and 2008 at the elementary, middle and high school levels. (Information for reading appears on page 14 and information for mathematics appears on page 15.)

The table on the lower half of each page is organized as follows:

First column:	Standardized residuals for each subject are specified for the district at each of the three levels (elementary, middle and high school) for all students. The table also shows the count of positive residuals and the count of available residual measures for all students in reading or mathematics and the combined counts of positive residuals and the count of available residual measures for both reading and mathematics.
Second column:	Standardized residuals are specified for the 2005 academic year
Third column:	Standardized residuals are specified for the 2006 academic year
Fourth column:	Standardized residuals are specified for the 2007 academic year
Fifth column:	Standardized residuals are specified for the 2008 academic year
Sixth column:	The “average change” calculation is shown. “Average change” was calculated as the slope of the best fit line among the available data points for 2005 through 2008.
Seventh column:	The average decile rank of the residual values for 2007 and 2008 is shown. For the “count of positive residuals” rows, the decile rank is the average rank for the three education levels.

Technical Notes and Methodology

High School Graduation Rates (page 16)

Three different methods were used to calculate high school graduation rates, all of which are considered reliable estimates of graduation rates in the absence of longitudinal student-level data.⁴ While using longitudinal data generates the most accurate estimates of graduation rates, such information is not currently available in most states. Federal CCD data on enrollments and completions (as described above) were used to generate the graduation rate estimates. While each method uses CCD diploma counts for the graduating class in a given year, the methods rely on different years of enrollment data and, therefore, generate somewhat different results. Further descriptions of the individual methods are provided below.

Trend lines as well as specific graduation rates are shown for 2003 through 2006. The table also shows calculations for improvement over time. Simple change is calculated as the difference between 2003 and 2006, between 2004 and 2006, and between 2005 and 2006. Where data for one or two years in the pair were not available, not comparable or suppressed, these change calculations could not be performed. In addition, improvement or “average change” was calculated as the slope of the best fit line among the available data points for 2003 through 2006. If only one data point was available, or if data were missing for both 2005 and 2006, average change was not calculated.

Data could be missing either because they were not available (indicated by “—”) or because they were suppressed (indicated by “+”). Graduation rates were suppressed if they were deemed unreliable or if a subgroup represented less than 5 percent of the district enrollment. Calculations were performed on unrounded numbers. Positive change values appear in color.

The three different high school graduation rate methods are:

1. The Averaged Freshman Graduation Rate (AFGR)
2. Urban Institute method (a.k.a. Cumulative Promotion Index or CPI)
3. Manhattan Institute method (a.k.a. Greene’s Graduation Indicator or GGI)

The methodology for each of these is explained briefly below.

⁴ State education agencies may use different methods to calculate the graduation rates they report for federal accountability purposes; the graduation rates presented here may not match state-published rates. The three methods used for The Broad Prize provide comparable measures across the 100 eligible districts that are located in 38 states and the District of Columbia.

Technical Notes and Methodology

Averaged Freshman Graduation Rate (AFGR)

This method divides the number of students graduating in year t by an average of the eighth-grade enrollment in year $t - 4$, ninth-grade enrollment in year $t - 3$, and 10th-grade enrollment in year $t - 2$:

$$\text{Graduation Rate} = \frac{G_y}{(S_{8,y-4} + S_{9,y-3} + S_{10,y-2})/3}$$

Where: G = Number of graduates receiving a regular diploma

y = School year

Denominator = Smoothed estimator for first-time 9th-grade enrollment

Urban Institute Method

This method assumes that graduation is a process composed of three grade-to-grade promotion transitions (9 to 10, 10 to 11, and 11 to 12), in addition to the graduation event (grade 12 to receipt of a diploma). Each of the transitions is calculated as a probability, based on current-year statistics, by dividing the enrollment of the current year by the enrollment of the previous year for the grade in question. These separate probabilities are then multiplied to produce the probability that a student in that school system will graduate.

$$\text{Graduation Rate} = \frac{S_{10,y+1}}{S_{9,y}} * \frac{S_{11,y+1}}{S_{10,y}} * \frac{S_{12,y+1}}{S_{11,y}} * \frac{G_y}{S_{12,y}}$$

Where: S_{grade} = Number of students in a specified grade

y = School year

G = Number of graduates receiving a regular diploma

Manhattan Institute Method

This calculation estimates an on-time graduation rate. The number of students who receive a diploma at time t is divided by an estimate of the number of students in the ninth-grade cohort three years earlier. The estimate of the ninth-grade cohort size is a smoothed estimator that takes into account population changes as students migrate between the public and private sectors between eighth and ninth grades, high ninth-grade enrollments due to higher than average retention in the ninth-grade year, and declining enrollment in 10th grade as students begin dropping out. This denominator is also adjusted for enrollment variability due to student mobility among districts and states rather than dropping out.

$$\text{Graduation Rate} = \frac{G_y}{\left(1 + \frac{(S_{9,y} + S_{10,y} + S_{11,y} + S_{12,y}) - (S_{9,y-3} + S_{10,y-3} + S_{11,y-3} + S_{12,y-3})}{S_{9,y-3} + S_{10,y-3} + S_{11,y-3} + S_{12,y-3}}\right) * \left(\frac{S_{8,y-4} + S_{9,y-3} + S_{10,y-2}}{3}\right)}$$

Where: G = Number of graduates receiving a regular diploma

y = School year

S_{grade} = Number of students in a specified grade

Technical Notes and Methodology

A recent National Center for Education Statistics study reported that when calculating a statewide graduation rate, the Averaged Freshman Graduation Rate came closest to approximating a longitudinal graduation rate. The smaller the district, state or student group being analyzed, the less precisely the three graduation rates estimate the true longitudinal graduation rate. The different methodologies sometimes lead to very different results because each uses different types of data from different years. All three have strengths and weaknesses but are considered acceptable.

Estimated high school graduation rates table: 2003–2006 (page 16)

In the upper half of the page, three different trend charts, with data for 2003, 2004, 2005, and 2006, are shown for each of the three different graduation rates for all students and for African-American, Asian, Hispanic and White student subgroups.

In the lower half of the page, the information in the table is organized as follows:

- First column: The three different graduation rate methods, Averaged Freshmen Graduation Rate, Urban Institute Method and Manhattan Institute Method, are specified for all students and for the African-American, Asian, Hispanic and White student subgroups.
- Second column: Graduation rates are specified for the 2003 academic year
- Third column: Graduation rates are specified for the 2004 academic year
- Fourth column: Graduation rates are specified for the 2005 academic year
- Fifth column: Graduation rates are specified for the 2006 academic year
- Sixth column: Change in the graduation rates is shown for the 2006 academic year minus the 2003 academic year
- Seventh column: Change in the graduation rates is shown for the 2006 academic year minus the 2004 academic year
- Eighth column: Change in the graduation rates is shown for the 2006 academic year minus the 2005 academic year
- Ninth column: The “average change” calculation is shown. “Average change” was calculated as the slope of the best fit line among the available data points for 2003 through 2006.

College Readiness Data (page 17)

District-level measures of the college readiness of students include SAT, ACT and Advanced Placement. The table provides measures of performance on these tests and participation rates.

With district permission, College Board and ACT provided SAT (reading and math) test scores and mean ACT (composite) test scores, respectively, for each district for 2005 through 2008. The SAT reading and math scores were combined to produce mean total SAT scores. Mean ACT composite scores were reported as provided. The College Board also provided the number of AP examinations at each score level (1 to 5) for each district for 2005

Technical Notes and Methodology

through 2008. The percentage of AP tests taken that earned passing scores (3 or above) was calculated. The percent of all AP tests taken with scores of three or above are detailed in this report.

The College Board and ACT do not calculate test participation rates. However, they provided the number of seniors who had taken the SAT and ACT tests (regardless of when they took the test during high school), as well as the number of juniors and seniors who took any AP test in the given year. Participation rates were calculated using these numbers as the numerator and enrollment data for 11th- and 12th-graders from the federal CCD as the denominator.⁵

The tables also show calculations of improvement over time. Simple change is calculated as the difference between 2005 and 2008, between 2006 and 2008, and between 2007 and 2008. Where data for one or two years in the pair were not available or suppressed, these change calculations could not be performed.

The “average change” calculation is shown. “Average change” was calculated as the slope of the best fit line among the available data points for 2005 through 2008. If only one data point was available, or if data were missing for both 2007 and 2008, average change was not calculated. Calculations were performed on unrounded numbers. Positive change values appear in color.

Data were suppressed if they were deemed unreliable. Test scores were suppressed if they were based on the performance of fewer than 15 students, as required by the College Board. Participation rates were suppressed if a subgroup represented less than 5 percent of enrollment in the relevant grades. In addition, subgroup results were suppressed if data on the number of test takers whose race/ethnicity was identified represented less than 90 percent of the total number of test takers for a given test and year.

Test scores and participation rates on college readiness examinations: 2005–2008 (page 17)

The information in the table is organized as follows:

First column:	The table is divided into the three different college readiness sections: SAT, ACT, and Advanced Placement. Each college readiness section first shows performance measures and then participation rates for all students as well as for the African-American, Asian, Hispanic and White student subgroups.
Second column:	Relevant values are listed for the 2005 academic year
Third column:	Relevant values are listed for the 2006 academic year
Fourth column:	Relevant values are listed for the 2007 academic year
Fifth column:	Relevant values are listed for the 2008 academic year
Sixth column:	Change in values is shown for the 2008 academic year minus the 2005 academic year

⁵ Participation rates in 2008 were calculated using 2007 CCD enrollments as the denominator, because 2008 enrollment data were not yet available.

Technical Notes and Methodology

- Seventh column: Change in values is shown for the 2008 academic year minus the 2006 academic year
- Eighth column: Change in values is shown for the 2008 academic year minus the 2007 academic year
- Ninth column: The “average change” calculation is shown. “Average change” was calculated as the slope of the best fit line among the available data points for 2005 through 2008.

Adequate Yearly Progress (AYP) (page 18)

The upper table shows overall AYP results for 2005, 2006, 2007, and 2008. For each year, the upper rows show the percentage of schools in the district meeting AYP targets and the percentage of schools in the state meeting AYP targets. The lower rows show whether overall AYP targets were met (“Y” for yes, “N” for no) by the levels/categories by which AYP is determined within that state for the given year.

The information in the lower table is organized as follows:

- First column: The breakdown of AYP results in English language arts and in mathematics are specified for the specific student subgroups for which districts and schools are held accountable in the state.
- Second column: AYP proficiency results are listed for 2008 or the most recent year for which results by accountability subgroup were available.
- Third column: AYP participation results are listed for 2008 or the most recent year for which results by accountability subgroup were available